

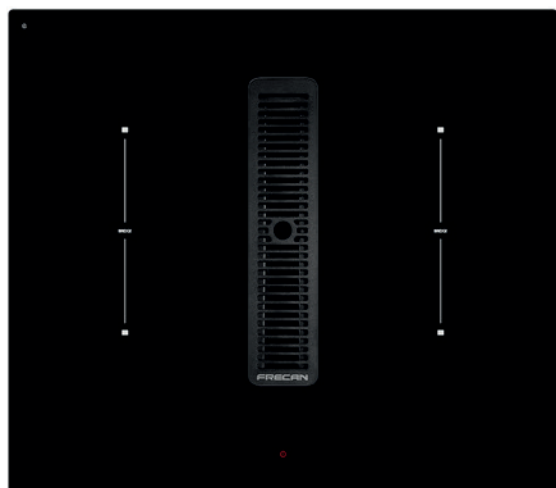
ADVANCE 2024

FRECAN
Extraction and cooking systems
ADVANCE 2024



Flow 4.4 - 60 - Surface Hoods

FRECAN

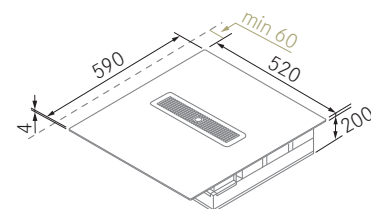


Technical design

600 - Outlet 220 x 90 mm. (External dimensions)

Cut-out 560 x 490 mm.

Ideal dimensions for installation in wall-mounted kitchens



Leave a fix space of 60 mm. from the wall to the edge of the hood and 75 mm to the cut out.

Versions

Dimensions (mm)	Finish	Textile Filters	Internal Motor	Ref.	Sonority		EE
					Pres. dBA min/max	Pow. dBA min/max	
600	Black	1	R900GP	27704	30/65	34/69	B

Hood



Technical Information

- Silence Motor R900GP.
- Touch Control Hidden.
- Deferred stop (Last Time).
- Saturation filters alarm.
- 9+1 power levels.
- Installation flush mounted or inset.
- Possibility of installation in wall-mounted kitchens.
- Recirculation through Hepa filters Included.
- Adhesive socle grid included

Optional Accessories

	Ref.
Flow 5 L750 Plasma Filter	90413
Flat Plasma Filter F800	90373
Plinth Installation Kit	90429
R-Drawer socle (Recirculation) H3	90267
Socle grid	90376

Compatible ducting. See page 174.

Hob



Technical Information

- Touch control with Slider
- 9 power levels in each zone
- Bridge Function.
- Power Boost function
- Recall function
- Stop & Go function
- Chef function
- Timer function in each zone.
- Independent timer
- Keep warm function
- Heating function.
- Automatic container detection
- Residual heat indicator
- Security lock

Description

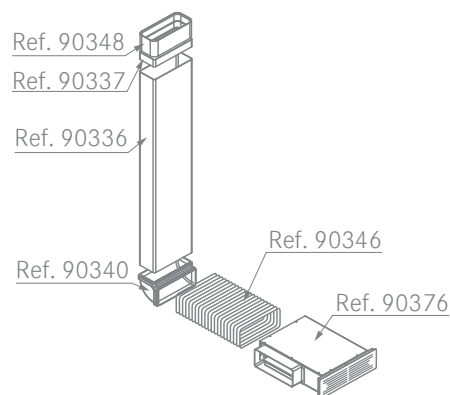
- Hob 600 mm. 4 Cooking zones
- Total measurements: 590 x 520 mm. (r=5)
- Cut-out measurements: 560 x 490 mm.

Cooking zones

- 4 zones ø175 mm. 1400 W.
- Power Boost 2100 W.

Maximum total power 7400 W.

Plinth Installation Kit 90429 (Optional)



Quick temperature selection with the slider: just touch the desired power level with a finger on the touch screen. The same happens with the suction zone, selecting the desired power.



Flow 4.4 - 78 - Surface Hoods

FRECAN

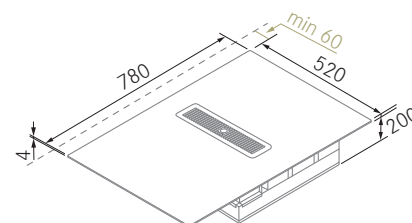


Technical design

780 - Outlet 220 x 90 mm. (External dimensions)

Cut-out 750 x 490 mm.

Ideal dimensions for installation in wall-mounted kitchens



Leave a fix space of 60 mm. from the wall to the edge of the hood and 75 mm to the cut out.

Versions

Dimensions (mm)	Finish	Textile Filters	Internal Motor	Ref.
780	Black	1	R900GP	27705

Sonority

Pres. dBA min/max	Pow. dBA min/max	EE
30/65	34/69	A

Hood



Technical Information

- Silence Motor R900GP.
- Touch Control Hidden.
- Deferred stop (Last Time).
- Saturation filters alarm.
- 9+1 power levels.
- Installation flush mounted or inset.
- Possibility of installation in wall-mounted kitchens.
- Recirculation through Hepa filters Included.
- Adhesive socle grid included

Optional Accessories

	Ref.
Flow 5 L750 Plasma Filter	90413
Flat Plasma Filter F800	90373
Plinth Installation Kit	90429
R-Drawer socle (Recirculation) H3	90267
Socle grid	90376

Compatible ducting. See page 174.

Hob



Technical Information

- Touch control with Slider
- 9 power levels in each zone
- Bridge Function.
- Power Boost function
- Recall function
- Stop & Go function
- Chef function
- Grill function
- Timer function in each zone.
- Independent timer
- Keep warm function
- Heating function.
- Automatic container detection
- Residual heat indicator
- Security lock

Description

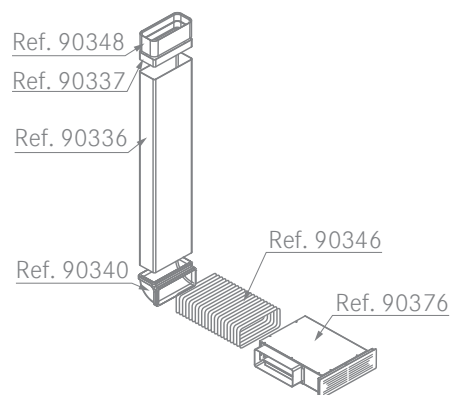
- Hob 780 mm. y 4 Cooking zones
- Total measurements: 780 x 520 mm. (r=5)
- Cut-out measurements: 750 x 490 mm.

Cooking zones

- 4 zones 210x190 mm. 2100 W.
- Power Boost 3000 W.

Maximum total power 7400 W.

Plinth Installation Kit 90429 (Optional)



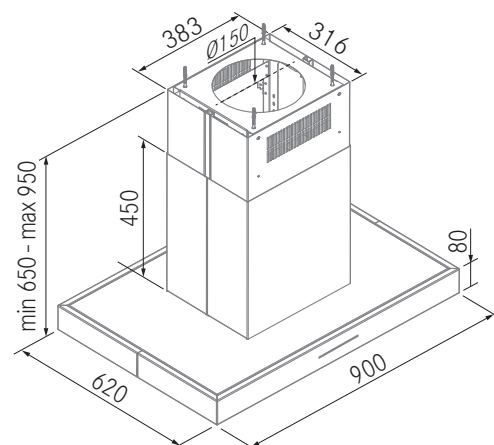
Quick temperature selection with the slider: just touch the desired power level with a finger on the touch screen. The same happens with the suction zone, selecting the desired power.

NI712 - URBAN Hoods



Technical design

Outlet $\varnothing 150$ mm. (External dimensions)



Versions

Dimensions (mm)	Finish	Aluminium Filters	Luces LED	Internal Motor	Ref.	Sonority		EE
						Pres. dBA min/max	Pow. dBA min/max	
900	S. Steel	4	2	VF700	27703	35/45	38/49	A



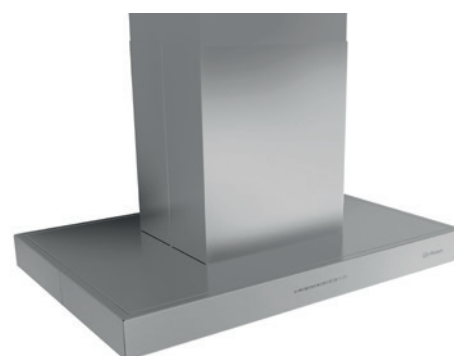
Technical information

- S. Steel finish.
- Motor VF700.
- Electronic Control.
- Deferred stop (Last Time).
- Saturation filters alarm.
- LED Lights lighting (3000K).
- 3 Speeds + Booster.
- Optional recirculation.

Optional Accessories

	Ref.
Carbon Filter FC-Plus	90381
NI712 Carbon filter kit	90422
Airsoft 1 Soundproofing duct (-3 dBA)	90182

Compatible ducting. See page 176.



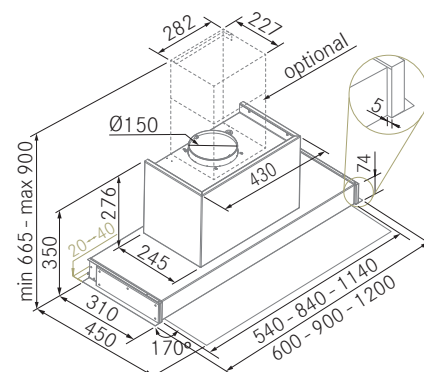
Hit DripOff - Built-in Hoods (Interfurniture)

FRECAN



Technical design

Outlet 150 mm.



* Depth adapter spacer Included. From 330 to 350 mm.

Optional top tube not suitable for cylindrical plasma and FC-Plus.



Labyrinth DripOff Filters

This filter technology, along with a removable grease collector, ensures maximum absorption, enhancing the hood's performance and enabling the collection of fats and oils.



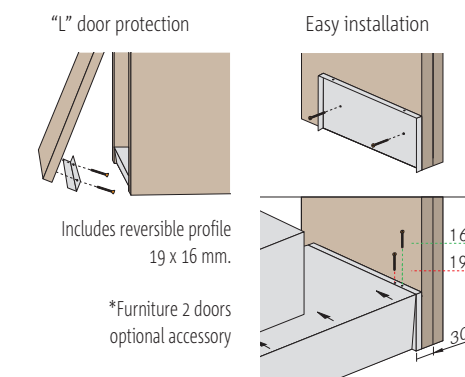
Motores Exteriores

	Ref.
Intermediate Motor - IL1300EC - Ø200	90406
Intermediate Motor - IL2200EC - Ø200	90405
Wall Motor - PA1200EC - Ø200	90407
Roof Motor - TJ2000EC - Ø200	90409
Roof Motor - TJ2500EC - Ø250	90408

Más información Página 179.

Dimmable LED Lighting

LED lighting with programmable intensity and colour regulation (from 3000K to 4000K).



Versions

Dimensions (mm)	Finish	Prof Filters	Tiras LED	Internal Motor	Ref.	Sonority		EE
						Pres. dBA min/max	Pow. dBA min/max	
600	S.Steel	2	1	VF700	27707	35/50	39/56	B
900	S.Steel	3	1	VF700	27708	36/50	40/56	A
1200	S.Steel	3	2	VF700	27710	37/49	41/57	B
				1100GP	27711	37/56	47/60	B
1200	S.Steel	3	2	Without Motor	27713	Complete with External Motors		

- Motor-Silence
- TouchControl
- Last-time
- FSA
- Dimmable LED
- DripOff
- Easy Clean

Technical information

- Stainless Steel Finish.
- Silence motors VF700 or 1100GP.
- Touch Control.
- Deferred stop (Last Time).
- Saturation filters alarm.
- Dimmable LED lighting.
- Easy Clean.
- 3 Speeds + Booster.
- Optional recirculation.

Optional Accessories

	Ref.
Cylindric Plasma filter C1000	90371
Cylindric Plasma filter C600	90372
Cylindric Plasma filter C500	90385
Carbon Filter FC-Plus	90381
Carbon Filter FC-Plus Mini	90369
Activated carbon textile filter (TC1) (with VF700)	90421
Recirculation kit (with VF700)	90134
Decorative S/S tube with adjustable height	90418

Ducting pipes. See page 176.

"L" double door protection. See page 178.

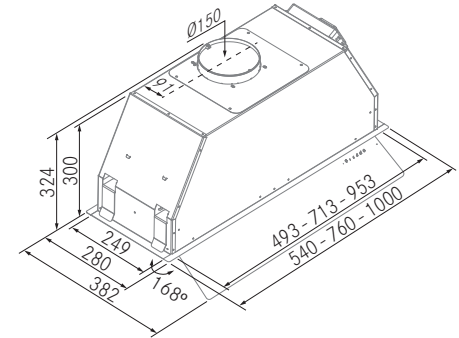
Feel White - Built-in Hoods (Cut-out)



Technical design

Outlet 150 mm.

Cut-out: 497 x 259 mm. - 730 x 259 mm. - 970 x 259 mm.



Touch Control in visor.



Versions

Dimensions (mm)	Finish	S.Steel Filters	LED Strips	Internal Motor	Ref.	Sonority		EE
						Pres. dBA min/max	Pow. dBA min/max	
540	White	1	1	VF700	27697	33/47	36/52	A
760	White	2	1	VF700	27698	31/46	34/52	A
1000	White	3	1	VF700	27699	32/48	35/54	A



Motor-Silence



TouchControl



Last-time



FSA



Dimmable LED



S.S Filters

Dimmable LED Lighting

LED lighting with programmable intensity and colour regulation (from 3000K to 4000K).



Technical information

- White lacquered finish.
- White glass visor.
- Silence motor VF700.
- Touch Control.
- Deferred stop (Last Time).
- Saturation filters alarm.
- Dimmable LED lighting strips.
- 3 Speeds + Booster.
- Optional recirculation.

Optional Accessories

	Ref.
Cylindric Plasma filter C1000	90371
Cylindric Plasma filter C600	90372
Cylindric Plasma filter C500	90385
Carbon Filter FC-Plus	90381
Carbon Filter FC-Plus Mini	90369
Activated carbon textile filter (TC1)	90421
Kit de recirculación	90134
Airsoft 1 Soundproofing duct (-3 dBA)	90182

Ducting pipes. See page 176.

"L" double door protection. See page 178.

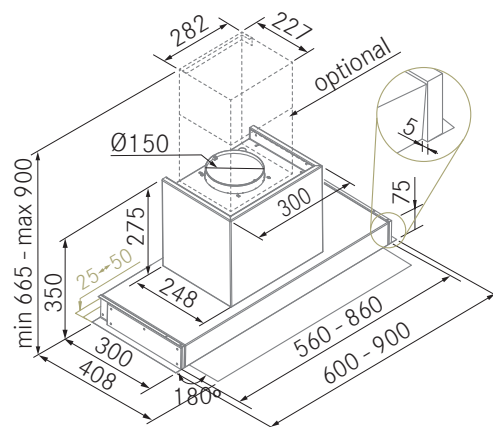


N711 - URBAN Hoods



Technical design

Outlet \varnothing 150 mm. (External dimensions)



Versions

Dimensions (mm)	Finish	Aluminium Filters	Luces LED	Internal Motor	Ref.	Sonority		EE
						Pres. dBA min/max	Pow. dBA min/max	
600	S. Steel	1	2	VF700	27701	36/50	41/54	A
900	S. Steel	2	2	VF700	27702	36/50	41/54	A



Technical information

- S. Steel Finish
- Transparent Glass Visor.
- Motor VF700.
- Electronic Control.
- Deferred stop (Last Time).
- Saturation filters alarm.
- LED Lights lighting (3000K).
- 3 Speeds + Booster.
- Optional recirculation.

Optional Accessories

	Ref.
Carbon Filter FC-Plus	90381
Carbon Filter FC-Plus Mini	90369
Activated carbon textile filter (TC1)	90421
Recycling filter kit	90424
Airsoft 1 Soundproofing duct (-3 dBA)	90182

Compatible ducting. See page 176.

Note - Built-in Hoods (Interfurniture)

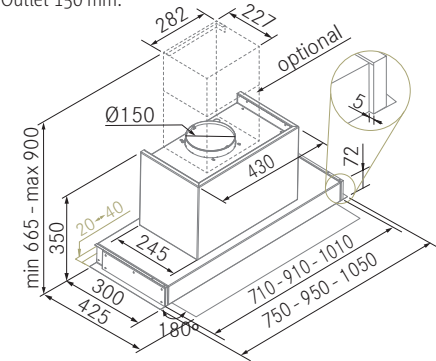
NEW MEASURES

FRECAN



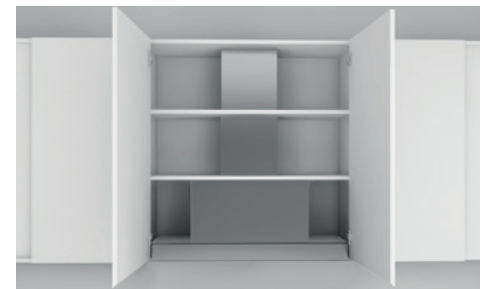
Technical design

Outlet 150 mm.



* Depth adapter spacer Included. From 325 to 350 mm.

Optional top tube not suitable for cylindrical plasma and FC-Plus.



Interior finish in 100% Stainless Steel cabinet.
Optional extendable upper tube.



Frameless LED lights

New aesthetics of LED Lights without frame more elegants.



Versions

Dimensions (mm)	Finish	S.Steel FILTERS	LED Lights	Internal Motor	Ref.	Sonority		
						Pres. dBA min/max	Pow. dBA min/max	EE
750	S.Steel	3	2	VF700	27736	36/48	39/51	A
950	S.Steel	4	2	VF700	27737	37/49	41/53	A
1050	S.Steel	4	2	VF700	27738	37/49	41/53	A

Dimmable LED Lighting

LED lighting with programmable intensity and colour regulation (from 3000K to 4000K).



H-Connect

Reference suitable with H-Connect hobs, allowing to control all the functions and features of the hood from a control located on the hob.



H-Connect



Motor-Silence



Remote



Electronic C.



Last-time



FSA



Dimmable LED



S.S Filters

Technical information

- Stainless Steel Finish.
- Transparent Glass Visor.
- Compatible with H-Connect Hobs.
- Silence Motor VF700.
- Remote control Included.
- Electronic Control.
- Deferred stop (Last time).
- Saturation filters alarm.
- Dimmable LED Lighting.
- 3 Speeds + Booster.
- Optional recirculation.

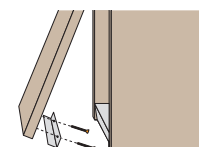
Optional Accessories

	Ref.
Cylindric Plasma filter C600	90372
Cylindric Plasma filter C500	90385
Carbon Filter FC-Plus	90381
Carbon Filter FC-Plus Mini	90369
Activated carbon textile filter (TC1)	90421
Kit de recirculación	90134
Decorative S/S tube with adjustable height	90418
Airsoft 1 Soundproofing duct (-3 dBA)	90182

Ducting pipes. See page 176.

"L" double door protection. See page 178.

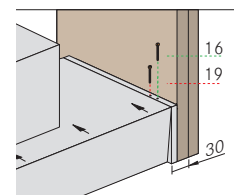
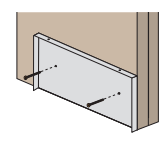
"L" door protection

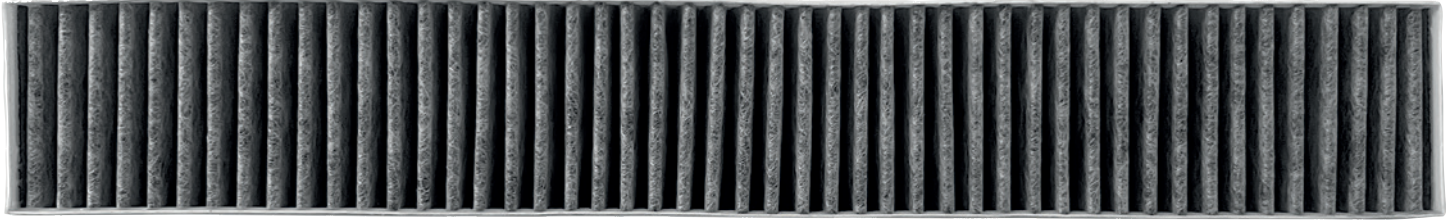


Includes reversible profile 19 x 16 mm.

*Furniture 2 doors optional accessory

Easy installation





The activated carbon textile filter is a comprehensive and optimal solution for filtering chemical particles in the environment, such as those generated during food cooking. The properties of activated carbon allow the retention of almost 80% of the odors and gases produced during cooking, as well as volatile organic compounds (VOC) particles.

NOTE: The use of HEPA filters is intended for exclusive air filtration products, as it is designed to effectively capture fine particles of 0.3 microns. However, it is not designed to retain chemical compounds such as those produced during the cooking process, such as gases and odors. In kitchen use, HEPA filters become saturated more easily, reducing the hood's airflow and its ability to capture air molecules. For this reason, at FrecanAIR, we discourage their use in extractor hoods and instead, we use Activated Carbon Textile Filters, which efficiently capture gases and odors produced during cooking

FUNCTION AND APPLICATION:

- Specifically designed for use with recirculating extractor hoods.
- Activated carbon filters are designed to adsorb chemical compounds, odors, gases, and volatile organic substances present in the air produced during cooking.
- Noise reduction.

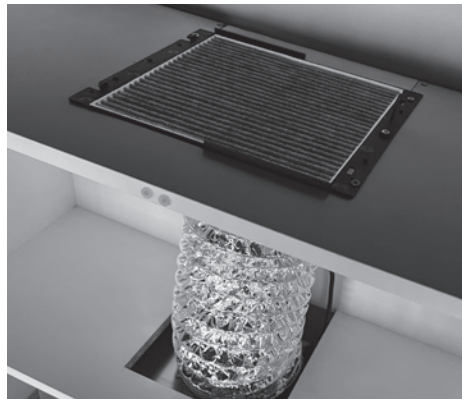
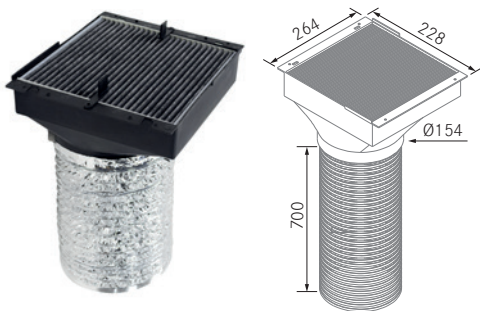
ADVANTAGES:

- Easy to install and replace (from the top).
- Optimal airflow efficiency - Very low pressure drop.
- Perfect air permeability.
- High physical or chemical adsorption capacity.
- The high density of activated carbon particles and the micro-porous surface structure ensure reliable absorption of odors and VOCs (volatile organic compounds)
- Powerful spilled liquid drainage system.
- Inlet and outlet air layers perfectly combined with open pores and fewer binders.
- Large internal filtration area.
- It is advisable to replace them every year to ensure proper functioning.

Activated carbon textile filter (TC1)

Cut-out: 230 x 230 - Ref.: 90421

Includes extendable tube.



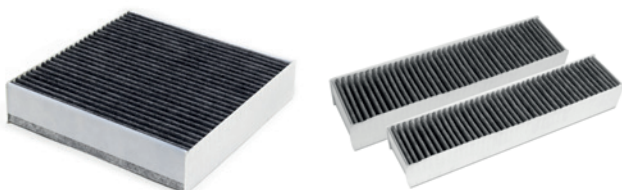
The filter is installed on top of the cabinet, channeling either with the flexible tube (included) or with a rigid tube (optional).

It is necessary to leave sufficient space between the filter and the ceiling for the air to flow properly.

The duct can be embedded in the wood of the cabinet or using Frecan's optional stainless steel tubes. Ref. 90418.

Replacement Activated Carbon Textile Filter

Ref.	Filter
90433	TC1
90425	Flow 4.4 - 60
90426	Flow 4.4 - 78



Odor Extraction Test according to standard EN 61591:2020 + A11:2020
Test result: Odor reduction factor of Activated Carbon Textile Filters:

Activated Carbon Textile Filter TC1 | 90421

79,4 %



You can download the certificates through the QR codes.

Always access the latest version
update of our catalog

Download this catalog for mobile



or on your desktop computer
accessing the download of our interactive catalogs in this link
<http://downloads.freca.com>

